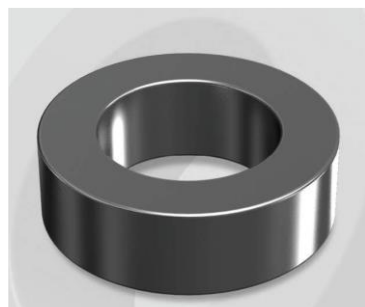


# CM572147G

OD : 572

### Electrical Characteristics

Material	Permeability ( $\mu$ )	AL $\pm$ 8% ( $nH/N^2$ )	DCB (% min) @ 20 Oe	Coreloss (mW/cm <sup>3</sup> , max) @ 50kHz, 500G
MPP	147	185	77.28	90



### Core Dimensions

Dimensions		Uncoated		Coated		Color	Packaging
		(mm)	(inch)	(mm)	(inch)		
OD	(Max)	57.15	2.250	58.00	2.283	Black	Box Qty = 88 pcs
ID	(min)	35.56	1.400	34.70	1.366		
HT	(max)	13.97	0.550	14.86	0.585		

### Physical Characteristics

Cross Section (A)	Path Length ( $l$ )	Window Area ( $W_a$ )	Volume (V)	Breakdown Voltage (Vac)
1.444 cm <sup>2</sup>	14.30 cm	9.48 cm <sup>2</sup>	20.65 cm <sup>3</sup>	1,000
0.224 in <sup>2</sup>	5.63 in	1,870,930 cmil	1.260 in <sup>3</sup>	

### Winding Information

0% Winding length/turn (cm)		
5.302		
40% winding factor Surface Area (cm <sup>2</sup> )		
133.19		
40% Wound Di.(mm)		
OD	ID	HT
66.85	22.74	25.26

### Typical DC Bias Performance

